



Connectra Appliances

Unified Secure Remote Access Gateway

Security Appliances

Connectra Gateway Access Control—Model 9072

OVERVIEW

Check Point Connectra™ is the only secure remote access gateway that unifies best of breed SSL VPN, IPSec VPN, and integrated intrusion prevention for the most secure connectivity with unmatched centralized management and deployment flexibility.

Connectra allows mobile and remote workers to connect easily and securely to critical resources while protecting enterprise networks and endpoints from external threats. A broad range of connectivity scenarios coupled with integrated intrusion prevention and unified with powerful central management offer unprecedented control over remote access configurations and security policy administration. As a first line of defense, Connectra offers comprehensive endpoint security to protect networks and endpoints from debilitating viruses, malware and malicious attacks.

End users will appreciate Connectra's streamlined access features and user-friendly portal interface. DynamicID™ SMS authentication eliminates the need to carry and manage tokens and Smartcards where two-factor authentication is required. In addition, roaming between networks without re-authentication is now possible with Check Point Endpoint Connect™. This lightweight client can be downloaded and installed directly from the Connectra portal. If data loss when connecting from public endpoints is a concern, session security can be ensured with Check Point Secure Workspace. Secure Workspace creates an encrypted virtual file-system, allowing complete destruction of all session data and activity logs when the session ends.

BASE CONFIGURATION:

- 10 Copper GbET
- Hard Drive 2x160GB
- Removable, hot swappable HDDs
- Dual hot swappable AC power (for load-sharing and redundancy)
- Management & Sync ports
- Console port
- USB ports
- 2 slots for expansion line cards
 - 1000BaseT line card
 - 1GbE Multi-mode SR fiber optic line card
 - 1GbE Single-mode LR fiber optic line card

BENEFITS

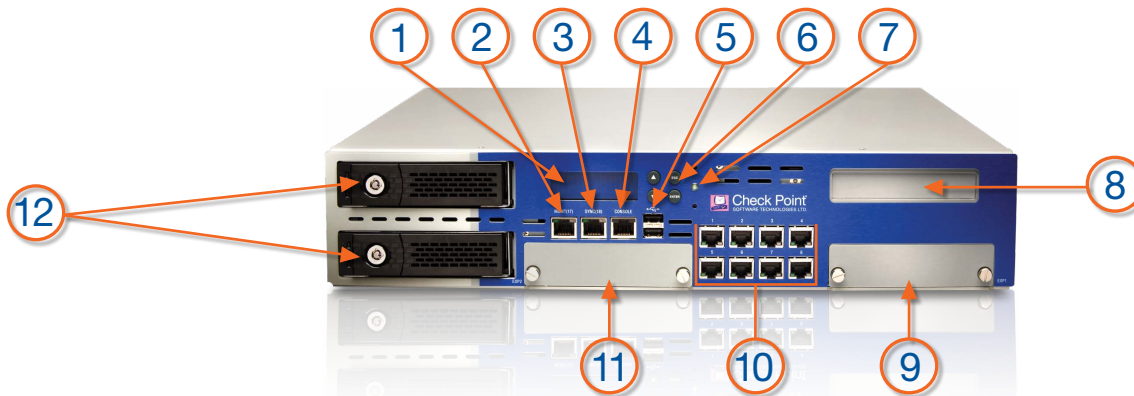
Unified Gateway with Central Management

- Consolidate SSL VPN and IPSec VPN connectivity in a best-of-breed unified secure remote access gateway
- Integrated intrusion prevention and comprehensive endpoint security block viruses, malware and malicious attacks
- Centralized management unifies policy deployment, client administration and event reporting
- Defend against the latest threats with automatic, real-time security updates with SmartDefense™ Services

Best End User Experience

- Ensure session security when connecting from public computers or Internet kiosks with Secure Workspace
- Uninterrupted connectivity even when roaming between wireless networks
- Automatic endpoint scanning prior to user authentication for additional level of security
- First and only vendor to provide direct SMS authentication eliminating need for Smartcards and tokens





1. LCD display screen
2. Management connection port - Ethernet connection to a remote management workstation
3. Synchronization port - for synchronizing with cluster members or a high availability peer
4. Console port - for a serial connection to the appliance using a terminal emulation program such as Hyperterminal
5. USB ports
6. Screen operation keys
7. Power indicator LED
8. Future expansion slot
9. Expansion line card exp1 (2 or 4 ports)
10. Built in ethernet ports (Lan1 - Lan8)
11. Expansion line card exp2 (2 or 4 ports)
12. Hard disk drive

TECHNICAL SPECIFICATIONS

LAN Support

- 10 Copper GbE

Hard Disk Configuration

- 2 X 160 GB hard disk drives
- Removable
- Hot swappable

Performance

- Maximum concurrent SSL users: 10,000
- Maximum concurrent IP Sec users: 10,000
- SSL / IP Sec hardware acceleration

Dimensions

- Standard: 17 x 20 x 3.46 in.
- 431 x 509.5 x 88 mm
- Weight: 16.5kg (36.3 lbs)

Power Requirements

- AC Input Voltage: 100-240V
- Frequency: 50/60Hz
- Power supply Maximum: 400W
- Power Consumption Maximum: 200.7W

Environment Operating Conditions

- Temperature: 41°-104°F / 5°-40°C
- Altitude: 8196 ft, 2,500 m
- Humidity: 10%-85% (non-condensing)

Compliance

- UL 60950
- FCC Part 15, Subpart B, Class A
- EN 55024
- EN 55022
- VCCI V-3AS/NZS 3548:1995
- CNS 13438 Class A (test passed; country approval pending)
- KN22KN61000-4 Series, TTA
- IC-950; ROHS

Note: Performance data represents the maximum capabilities of the systems as measured under optimal testing conditions.

CONTACT CHECK POINT

Worldwide Headquarters

5 Ha'Solelim Street, Tel Aviv 67897, Israel | Tel: 972-3-753-4555 | Fax: 972-3-624-1100 | Email: info@checkpoint.com

U.S. Headquarters

800 Bridge Parkway, Redwood City, CA 94065 | Tel: 800-429-4391; 650-628-2000 | Fax: 650-654-4233 | www.checkpoint.com